

The Mercantile Times

From Eastern America's Highest General Store
Elevation 5049.42'

Snow Fall
As Of April 5th
105.6"



Welcome To Spring From All Of Us at Fred's

Although we are not sure if it is really here yet, we like to think it is coming soon to Beech.



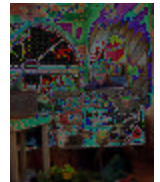
Our Ski Season ended on March 14th with some good conditions up until the last. This has been a great winter for all of us in the ski business. With 90 inches of snow, which came just at the right times for holidays and great weekends, this winter will be remembered.

All of the friendly crew at Fred's worked extra hard to help folks enjoy their mountain visit. The month of February in our Ski Shop broke a record as our best one ever! Thanks to everyone in the Ski Shop who helped make this happen! Hope you will join us next season. Now it's time to think spring!

The Wild Bird Supply Co. Is Open And Ready For Business

With the end of winter and the beginning of spring, our Ski Rental Shop makes a big change. The snowboards hanging from the ceiling are replaced by birdfeeders and houses. We offer a wide variety of feeders and houses for all of our fine feathered visitors. Beech Mountain is a wonderful spot for observing a variety of birds.

at Fred's General Mercantile a very special place to visit. Many interesting gifts, flags, birding equipment, and garden items await your browsing.



Meredith, Peter and John have brought it all together to make our Wild Bird Supply Co.

If you have someone who deserves something special, chances are you can find it here. Stop by on your next visit to the Mountain!

The Hummers Are Coming

With the arrival of spring we await one of our favorite visitors—the Ruby Throated Hummingbird. We recommend placing your feeder out, ready for action, around April 15th. Hummingbirds tend to establish a favorite feeding spot early on and return there for food all summer long. With just the right mix of sugar and water and careful attention to keeping it fresh and clean, you'll enjoy these special visitors and make them very happy. We keep a supply of feeders on hand from ornate glass to your basic favorites.



Here are some helpful tips:

- ? Hang near flowering plants with pink, red or purple blossoms
- ? Change nectar and rinse feeder thoroughly at least once a week—Hummingbirds are very particular!
- ? You can make your own nectar by mixing 4 parts water with 1 part sugar, bring water to a boil to dissolve sugar, and allow mixture to cool completely before filling feeder

Have Fun!

Weather Info From Beech Mountain

Month	Average High	Average Low	Rain	Highest Temp	Lowest Temp	Snow Fall
February	34.9°	19°	3.16"	53°	0°	28.8"
March	46.7°	30°	3.55"	63°	10°	15.2"

The Mercantile Times

PERIODIC E-NEWSLETTER FROM FRED'S GENERAL MERCANTILE
BEECH MTN., NORTH CAROLINA



And The Winner Is.....Lance

The winter forecast show down is over and Lance is the winner. Below you will find the weeks of winter listed with the forecast of both Ray Russell and Lance the Woolly Worm Race Winner, and the actual weather.

Week	Ray	Lance	Actual	Winner
Dec 22—28	Cold and snowy	Light snow	Cold, Light Snow	Lance
Dec 29—Jan 4	Cold	Light Snow	Mild Light Snow	Lance
Jan 5—11	Mild	Light Snow	Cold, Light Snow	Lance
Jan 12—18	Cold and Snowy	Light Snow	Mild, Trace of Snow	Lance
Jan 19—25	Cold and Snowy	Cold No Snow	Cold and Snowy	Ray
Jan 26—Feb 1	Cold and Snowy	Cold No Snow	Cold Snowy	Ray
Feb 2—Feb 8	Cold	Cold No Snow	Cold, Icy, Light Snow	Ray
Feb 9—Feb 15	Cold and Snowy	Cold No Snow	Cold Snowy	Ray
Feb 16—Feb 22	Mild	Cold No Snow	Near Normal Temps No Snow	Tie
Feb 23—Feb 29	Cold	Light Snow	Cold Snowy	Tie
March 1—March 7	Cold and Snowy	Light Snow	Mild Light Snow Late	Lance
March 8—March 14	Mild	Light Snow	Cold, Light Snow Up Top	Lance
March 15—March 21	Mild	Light Snow	Normal Temps, Light Snow	Lance

Time To Plant Grass

Every spring folks come into Fred's and ask about planting grass seed. Now is the time, before the leaves come out, in time to take advantage of spring rains.

We suggest planting creeping red fescue which is similar to the mountain's natural grass you see all over Beech. If you are planting on a bank, our Beech Mountain Mix, (2/3 creeping red and 1/3 annual rye) is best.

Remember to plant early, use a little fertilizer, maybe some lime, and use plenty of seed for good coverage.

Stop in and we can help with advice, ideas and seed.

Fire Station Looking Good

The new sub station located on St Andrews Road is nearing completion, May 1st is the target date. Designed by members of the Beech Mountain Volunteer Fire Department and built by Cubic Construction from North Wilkesboro, this station will be a great addition to the mountain.

Meet the Crew

Joyce Correale ... Joyce is the one responsible for all the good things in Fred's Backside Deli. Our entire crew is the greatest ever, thanks to her direction. Joyce has been part of Freds for 10 years, with a brief break while she had her own restaurant at Four Seasons. A yard of beautiful flowers, one great son and daughter in law, two wonderful grand children and bluegrass music, (Doc and Dave a couple of her favorites) are the pleasures in her life. By the way, a Subaru and four studded tire get her to work every time from Old Beech Mountain.

Thanks Joyce for a lot of great deli delights!

Watch for Fred's On Line Store Soon

Town News

? Ground breaking ceremony for the new Recreation Building at Buckeye Lake Recreation Center Saturday, April 17th at 12 noon. Enjoy a free meal and time with your neighbors.

? Revised Town Trail Map ready by May

Email us your ideas...
fred@fredsgeneral.com